

The difference we're making - Year 3 summary...

Extract from The National Lottery end of year report July 2022 (covers the period 13 May 2021 - 12 May 2022)



Reducing food waste by receiving and redistributing 51.67 tonnes of surplus food¹



60%² of our surplus food is fruit, veg & dairy so, we're stopping 000s of tonnes of greenhouse gases being released



7,150⁵ Grocery visitors received 21,450 bags of shopping across 150 grocery days



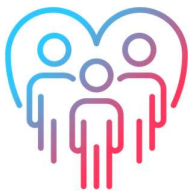
We provided the equivalent of 122,848³ meals for up to 21,450 beneficiaries⁴



Households save between £360 - £900 a year using the Grocery⁶



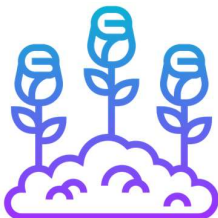
Grocery members come from across the whole of Macclesfield and wider Cheshire East area



Supported by up to 90 volunteers



Working in partnership with 8 other Charities / community groups



Over 300 groups and individuals accessed our garden / allotment



Over 250 individuals engaged with / attended our community and wellbeing events

Sources:

1 Based on quantities of donations received from Fareshare, supermarkets and other partners

2 Over 60% of the surplus food we redistribute is classed as fruit, vegetables or dairy (source Fareshare / Neighbourly)

3 Equivalent meals: based on the assumption of an average meal weighing 420g (based on the average of a range of typical meal weights, using data derived from Food Portion Sizes, FSA 2008)

4 Based on each grocery visit benefiting up to 3 individuals (source: based on analysis of February 2022 Grocery visitor data)

5 Grocery volume and scale - 13 May 2021 - 12 May 2022

6 Based on a weekly saving of between £10 - £25 per visit x average of 3 visits per month x 12 months (source(s): Member survey June 2021 / Analysis of member visits - February 2022)