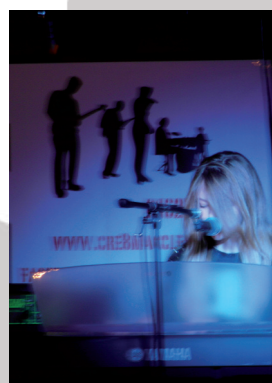
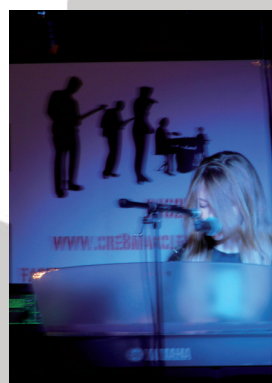




Annual Report 2015



creg



Contents

2	FAITH CHANGE COMMUNITY	11	CLUBS
3	HIGHLIGHTS	13	RESIDENTIALS
4	FROM THE TRUSTEES	15	RD (WORK EXPERIENCE)
5	CRE8 FESTIVAL	17	SOCIAL ENTERPRISES CRE8 WORKS & CRE8 FACILITIES
6	JOURNEYS CRE8 JOURNEY DIAGRAMS & CRIS SYSTEM	19	GET INVOLVED
7	LEARNING PLUS	20	RESOURCES & FUTURE PLANS
9	OFFBEAT (MUSIC & BIKES)		



THE HOMEMADE BY CRE8 MARK

We're proud to launch the 'Homemade by Cre8' mark. This mark indicates when something has been designed, made, or built by ourselves using the skills and talents we have in our team and community.

When you see this mark on something - you know that it was made by Cre8.

This report was designed, written and produced by people at Cre8. All photographs were taken by our workers, volunteers and young people.

So it gets the Homemade by Cre8 mark!



Cre8 is made up of Cre8 Macclesfield Ltd (the charity), Cre8 Works Ltd and Cre8 Facilities Ltd (the social enterprises). Cre8 Macclesfield is a registered charity number 1147150 and a registered company number 07737871.

Cre8 is based on the Moss Rose Estate on the south side of Macclesfield.

This report covers the financial year 2013-14.

FAITH CHANGE COMMUNITY

I was away from Cre8 for three months between October 2014 and January 2015, having a sabbatical! My first in forty years of work I should hasten to add.

What I learnt in my three months away from the day-to day workings of Cre8 is that this project has some of the most innovative and life-changing ways of working with young people and the community in which we live.

I think Cre8 is really good at making something good out of what we've got, whatever it is. Sometimes it feels as though Cre8 can make something out of almost nothing. Be it a bike project and brilliant bikes out of a pile of what looks like junk, or a warm fuzzy recording studio out of a smelly rotten building that the council plans to pull down. Or, a song written and sung by a young person who thought they weren't good enough to sing.

The common factor in all these things is people, because people do these things and people are always something, they are never nothing. We put a huge value on people at Cre8; we value everyone no matter who they are, and we do our best to treat everyone equally, because we believe that's what God does and wants us to do.

We love to make things at Cre8; with young people and in-house, using the skills that we have.

This annual report is one of those things. It's Homemade and so we've decided to 'badge' the things we make ourselves with our 'Homemade by Cre8 Mark' as you can see from the opposite page. This is real empowerment. To see what we have amongst ourselves in our own community and to use it. We all need encouragement to help us to do this. Sometimes we also need someone to coax us, to be kind and tell us that we're good. To make things happen for us and with us. In a very big sense, Cre8 itself is Homemade.

When I was on sabbatical I went to visit Churches and projects here in the UK and also in America and the Middle East, I stayed with people in Birmingham, Dorset, London, Liverpool, Philadelphia, Washington, Chicago, San Francisco, Nazareth, Jerusalem and Bethlehem in the Palestinian West Bank. Wherever I went I saw people doing something with what they had, people in communities making the best of what was available to them. In the West Bank I was amazed and inspired by the innovation, determination and sheer resourcefulness of the Palestinian Christians living under occupation. I learnt that many of the difficulties that people face are the same, wherever you live. Poverty exists everywhere, it's just the scale that differs.

We do many inspiring things at Cre8, but in particular enabling

young people to grow into being active members in their own neighbourhood, empowering them to bring transformation and change into their own lives and the lives of people around them is probably the most profound thing that we do. This solution to poverty could work everywhere, but it's challenging and draining work.



The Queen's Award for Voluntary Service

This year, Cre8 was nominated for the Queens Award for Voluntary Service and some months later we heard that we'd won. I am humbled, amazed and enormously pleased that people I have been working with for the last ten years have been given this award; the equivalent of an MBE, the highest award that a voluntary community organisation can achieve; they deserve nothing less.

Rev Rob Wardle, Cre8 Director

“This project has some of the most innovative and life-changing ways of working with young people and the community in which we live.”

Highlights

FROM THE PAST 12 MONTHS

31

Bikes built or rebuilt at Bike Shed over 4 months



22

Young people on our Learning Plus education project

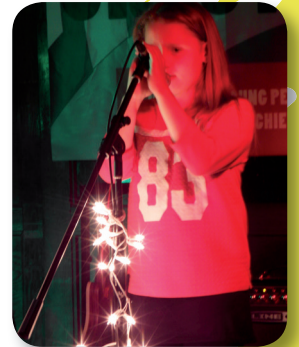


20

Young people & young adults supported into work through cre8's RD work experience project and our social enterprises

542

Professionally tutored music lessons delivered to young people (drums, guitar, singing, piano & violin)



44

Young people went on a cre8 residential - some went on more than one!



£87,500

Earned by our two businesses; cre8 Works and cre8 Facilities



53

Young people regularly attended our Clubs projects each week

Dave Mock

What I love about Cre8 is how it takes young people's futures seriously. Often organisations want young people to fit into a category or a strategy or even a stereotype. But Cre8 encourages young people to ask, "Who am I and where do I want to go?". Cre8 offers young people a judgement free fresh start, a new perspective and a change of course where they have a real say in where they are going.

Cre8 is on the lookout for new Trustees; people who are enthusiastic, passionate and committed. Trustees carry the responsibility for the charity and everything it does. We are looking for creativity, ideas and people who are interested in determining the future for Cre8.

If you think you have something to offer, we'd like to hear from you. Get in touch.

From the Trustees...

WHAT DOES CRE8 MEANS TO YOU?

Ruth Thompson

As a newly appointed Trustee, I am still learning the ropes. I've been to three Trustee meetings and had a guided tour of the buildings. The 'learning projects' are hugely interesting to me. By cooking and sharing food in a safe space, children and young people can learn numerous skills.

Ameera Hill

After starting to go back to Church and going to St Barnabas, I met a thriving community of individuals who immediately made me feel part of a family, it was not long before I was approached to be a Trustee of Cre8. Whilst I was flattered, I didn't really know how I could help, but knew I wanted to be involved.

I love the sense of community, I love the unnerving determination of all the workers and volunteers who give up their time tirelessly and I love the energy of the young people. I endlessly feel guilty about not doing enough, but over time have recognised that my own life experience adds value in a small way to this project, and I am proud to continue my journey with Cre8.

Pip Mossdrop

It has been a pleasure and a privilege to be part of the Cre8 journey from the programme's inception ten years ago as a modest evening club for young people on the Estate. We have continued in faith and have become a substantial part of the local community, delivering and influencing service provision in Macclesfield and beyond.

I have personally experienced the fundamental changes in the lives of the young people and their families who are now part of the Cre8 organisation. We are blessed with a wonderful, committed and skilled team of staff, volunteers and Trustees led so well by Rob Wardle; we are grateful to them all.

Cliff Mills

I got involved with Cre8 because I wanted to support the vision of bringing hope to the young people of the Moss Estate. I continue to be involved as a Trustee of Cre8 because I want to support all the team including the volunteers and supporters who are too numerous to mention, bringing hope to the young people of the Moss Estate. It is a privilege.

CELEBRATING YOUNG PEOPLE

The Crag Festival is a week of music, storytelling, work, art installations, dancing and food. All inspired, created and performed by our wonderful young people - it is not to be missed!

Go to: www.cregfestival.org
to find out more

Journeys

CRE8 JOURNEY DIAGRAMS & 'CRIS' SYSTEM

What is it?

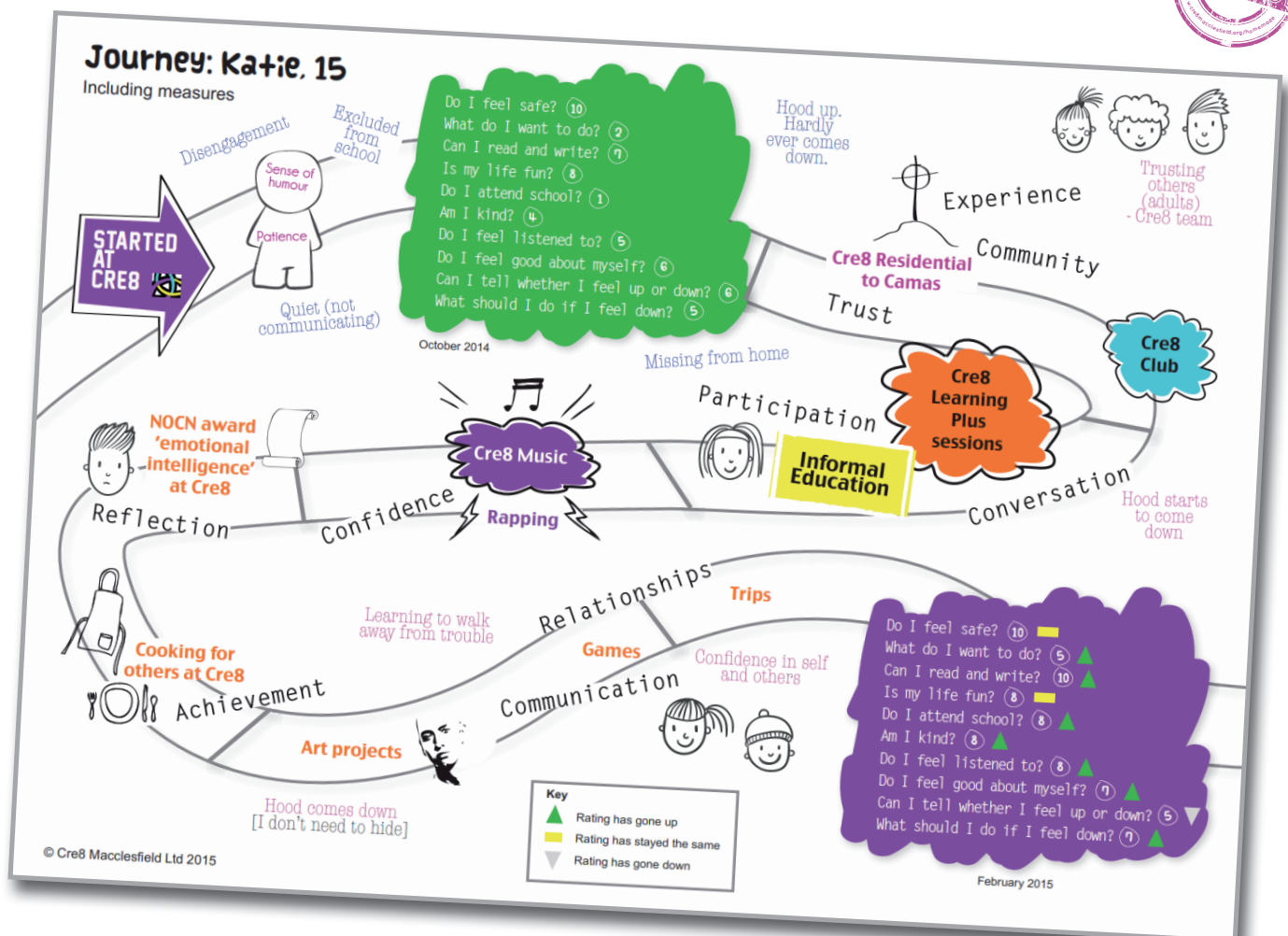
So we wanted something, a visual which showed the benefits of what Cre8 were doing with young people. We also wanted to make a visual that young people could own themselves, that they could see and use to reflect on their own journey and learning. We came up with the idea of a Journey Diagram and we set to work building a graphics template that we could use and adapt for each individual young person. We did it! We love the results and from the comments we've had from supporters, funders, businesses, youth workers and young people - they love them to. Each young person can have their own personal journey diagram. They first sit down with a youth worker and put their

own rating on ten 'measures' which they have chosen from a menu of 50. We record everything they are doing with Cre8 on our 'CRIS' system (I'll come back to what that is) then say six months later they sit down again with a youth worker and rate their ten 'measures' again. The measure ratings form the billboards on their journey diagram, the other pictures and graphics are taken from CRIS, possibly with some quotes taken by the youth worker during sessions. This information is then used to build the diagram and there you have it; a wonderful graphic showing their journey!

So what is CRIS? It's a web-based Recording and Information System that our project support worker has

built in-house. It records things like attendance and achievements for individual young people. It's brilliant and it makes youth worker's lives so much easier than they used to be; writing things on pieces of paper and then forgetting where it was filed!

The person building the Journey Diagram can easily bring together all the projects and achievements of one young person, using data from CRIS, making the job of building the journey diagram much easier. We presented CRIS at a National Learning Day for youth workers earlier this year, and we're hoping to open-source it in the future so that other charities and youth work organisations can adapt it and make their own version.



Learning PLUS

CONFIDENCE

Feeling ok

Hope

Taking part

EMPOWERMENT

Learning Plus is Cre8's Alternative Education provision.

This means it's a place for young people who are struggling in mainstream education to come as part of a tailored timetable which reflects their needs and personalities.

The Cre8 Learning Plus team of youth workers, staff, volunteers, student and session workers gives us a broad range of skills and experience to engage and help young people who are referred to us.

Our emphasis is not on academic subjects. Our aim is to re-energise young people about education as well as to help them with challenges like anger-management, low self-esteem and anxieties around adolescence. This means we do a lot of therapeutic

sessions with the young people using art, craft, cooking and game-playing (UNO seems to be this year's favourite game) but also model making, sewing, gardening and plate design! This year has also seen our first NOCN courses being delivered by Cre8 (see opposite).

We do a lot of eating together because that's an important part of community. Recent cooking highlights have included a truly excellent chicken in cream sauce meal and a succession of some of the best chocolate cakes in Western Europe.

In many cases, the young people who come to Learning Plus have had a negative experience of mainstream education. We deliberately aim to redress that.



By charging schools and education agencies, Learning Plus earned £70,000 in 2013-14. That's 30% of the total income for the charity.

NOCN GAINING QUALIFICATIONS

NOCN accreditation - why do it? **Everyone needs recognition for what they've done.**

In September 2014 the Cre8 Learning Plus project started delivering NOCN qualifications to young people referred to us.

The NOCN qualification we deliver is in small stages and fits with our aims to increase learners' confidence and educational possibilities. We

currently offer units in Cooking and Emotional Intelligence and plan on offering more as we develop the programme.

Moving to NOCN was a big step for Cre8; a move from an informal approach to accrediting what young people achieve during their sessions. We feel it is massively important for the young people to gain recognition for their achievements even though they are not in mainstream education.

We want to validate the work, effort and enthusiasm that young people put into their Cre8 Learning Plus sessions. We feel it is important for young people to have a qualification for when they finish their time with us.



“ In two years I've gone into foster care and out again and I've been in two different special schools. Through it all cre8 has been a safe and fun place to be. ”

GRAHAM'S STORY

I've been coming to Learning Plus for almost two years now. I started because I found it difficult to fit in at different mainstream schools. Some bad stuff had happened in my life and it affected how I got on with other people. Cre8 knows this and allows me to be myself. It supports and encourages me without forcing me to fit into a big organisation like a school.

At different times I've come to Learning Plus as little as once a week or almost full time. In that two years I've gone into foster care and out again and I've been in two different special schools. Through it all Cre8 has been a safe and fun place to be.

As well as learning a lot about cooking and art I get to talk about how I feel: what I'm afraid of and what makes me angry. The best bits of Learning Plus are cooking, art and when we get to go on trips like Blaze Farm or the cinema.

There are meetings every month or so where social workers and other people try to work out how I'm doing and how they can help me. Sometimes I find them difficult (sometimes they are OK) but someone from Learning Plus comes too and that helps.

Offbeat

SMALL GROUPS
fixing things

focused
Drop-in

Lessons
SKILLS

Offbeat Projects are often Cre8's first point of contact with young people on the Moss Estate.

They run on a 'drop-in' basis but are activity focused projects, offering young people the opportunity to learn new skills, grab some well-deserved snacks and have fun!

Currently our Offbeat projects are Cre8 Music and Bike Shed.

Cre8 Music runs three days a week after school. We have a great team of approachable and experienced music tutors who offer support and music-making opportunities for young people.

Youth Music granted us the original set-up funding and have agreed to continue to support us until 2016.

Bike Shed runs on Mondays, after school. It's a place for young people to bring their old bikes and learn how to repair them under the supervision of our bike-enthusiast volunteers. We also have a collection of second-hand and donated bikes for young people to work on, building them up from scratch!

We have recordings available on our website.

Have a listen to young people singing their own original songs - some of them are incredibly moving.

www.cre8macclesfield.org/music

YOUTH MAKES MUSIC

cre8 Music stats for this year:

- 542 professionally tutored music lessons;
- 99 music Drop-in sessions;
- 2 concerts, with over 70 people attending each, and featuring 18 young people performing (either singing or playing an instrument).



CRE8 CONCERTS

They are inspiring to us because they want to learn, change and show their community what they can do.

So, we're not really sure if it's right to call our concerts 'concerts'. The reason being that although we want young people to be able to play to the best of their ability, the quality of their performance is not the most important thing for us.

So rather than seeing intense competition to be the best performer, what the audience sees and experiences is young people supporting and encouraging each other; this is community.

We think the audience gets much more than a music performance when they come to a Cre8 Concert. Performing in front of people can be nerve-wracking, it is not unusual for there to be long pauses and

sometimes restarts during a Cre8 Concert, but these things are not out of place and if you are sat in the audience then you can't help but will the young people on, you can see how much it means to them.

These young people write their own material, they turn up for lessons, record and turn up for practice at the Cre8 Building – themselves, and often they want more practice time than we can give them. They are inspiring to us because they want to learn, change and show their community what they can do. Listen to the words they sing, watch how much of themselves they put into their performances. It's life-changing stuff.



CRE8 MUSIC AWARD LEVEL 1

This year Cre8 Music has introduced the Cre8 Music Award Level 1. The Award is the first step on our new in-house accreditation system, designed to reward the young people for the amazing work they accomplish at Drop-in and inspire them to try new aspects of music.

To complete the Award young people must write an original song and composition, perform in-front of others, learn beginner's music theory and the basics of our recording studio. Participants receive a certificate as a reward for completing the Award and are then offered the opportunity to either restore and take home an instrument for themselves, or accompany us on a trip to a live music concert. The first four young people to complete the Award went to see The Script and Tinie Tempah at the Manchester Arena.



CLUBS

COMMUNITY

Eating together

Fun

Respect

MAKING THINGS

Sharing

Our Students and Cre8 Clubs

Not really new faces but definitely new roles! Jenny and Keirra joined Cre8 this year as student Youth and Community Workers. They studied the Engage Christian Youth Work Course at Nazarene College in Manchester, and Cre8 provided them with a youth work placement for the duration of their course.

Jenny and Keirra have both grown up on the Moss Estate and have been involved with Cre8 since they were old enough to attend clubs.

At Cre8 we're really keen to help people find their vocation and taking on student workers is one way of doing this.

A Youth Work qualification is a really useful thing to have and can go alongside other qualifications to make you more attractive to employers.

It's also really nice to see young adults planning, running and leading clubs, which they were part of when they were younger!

“ It's just nice to go and see people every week and hang out and chat and have food ”



HIGHLIGHTS

- Residentials to Gradbach, Boys Brigade in Kirkham and Camas in Scotland
- HUGE end of year party before the summer holidays where we played games and made dens in the garden
- RE:CRE8 joined the Raise Hope for Congo campaign
- Favourite crafts this year included: jewellery making with Zoe and sewing scarves with Rosie



Residentials

EXPERIENCE Acceptance Laughter
Respect Community TRANSFORMING

Camas - Scotland

Camas is probably our best residential and the most powerful piece of youth work we do.

A week living in community, in a remote, wild place is a fantastic experience for young people; learning to deal with difference, conflict and emotion, but also to share fun and challenging experiences and to laugh together. We took a group of 15 young people this year - all of whom had never been to Camas before. Although it was exhausting it was brilliant!



C2C Bike Ride

A group from Cre8 cycled the 140 mile Coast to Coast ride over four days in July.

Lots of gruelling uphill but also many exhilarating down hills, and a nice dip in the sea at the end. Well done guys!

Girls Camp - Gradbach

Girls from our younger Club spent three days at the Farmhouse at Gradbach.

Activities included: watercolour painting, an afternoon in the Park at Buxton, ice cream at Blaze Farm, chore teams, friendship bracelet making, exploring the area, and marshmallows round the fire.





A group from the Cre8 Music project went to the Greenbelt Christian Arts & Music Festival and camped with a group of Cre8 workers, volunteers and their friends and families.

Greenbelt is a fantastic place to take young people - the Festival is big enough to have that 'Festival vibe' but it also feels like a safe and family-friendly place.

Highlights were Sinead O'Connor, glo-in-the-dark face paint and Tom's cooking!

Cre8 Music - Greenbelt Festival

Taize Community - France

A group of young adults from Cre8 went to stay with the Taize community in France for a week during July. Lots of new experiences with other young adults from all over Europe - going to prayer three times a day, silence, doing chores, being in discussion groups with people from all over the world, seeing the Eiffel Tower (quick stop en route!).



Boys Camp - Boys Brigade, Kirkham

Boys from our younger club spent a long weekend at the Boys Brigade base near Preston.

There is a great set-up for youth groups and although this was our first year at the base - we plan to go back.

Archery and the climbing equipment were definitely top of the list of highlights.

Overnight Boat trip - Canal boat 'Ivy'

A small group of Year 7 Boys stayed overnight on the canalboat Ivy. The weather was brilliant and they guys did lots of fishing.

They managed to stay up all night - finally falling asleep at 6am!



RE:Cre8 - Boys Brigade, Kirkham

The weekend (for a group of young adults) involved a lot of table tennis, visiting a farm, spontaneous midnight trip to Blackpool and a random set of challenges that included being dropped in the middle of Kirkham and having to work out a secret code!

It's always really difficult for us to raise enough money for residential. Grant funders see these as just a 'holiday', but they are much more than that. on Residential you have to deal with stuff - you can't run away from it.

RD (work experience)

Employability · Support · WORK
Patience · FIRST STEP · Practical

Cre8 RD is our work project. It's about getting young people and young adults ready for the world of work.

Cre8 RD is our work project where young people do practical work voluntarily rather than being employed as they can be on Cre8 Works or Cre8 Facilities. On RD we give young people the opportunity of doing some practical work as part of their Learning Plus timetable, or post-school RD can be the first step towards employment

for young people over 16 who are not in Education Employment or Training (NEET).

Leading RD sessions requires patience from the workers, many of the young people who first come onto RD have little or no experience of getting up in the morning ready to do a work session

– but we try hard to support the young people to learn the benefit of a good night's sleep beforehand and breakfast before a session can begin. So food and drink often feature in RD sessions as well as work!



OUR JOBS

cre8 RD has a reputation for doing 'gardening work' but we do a lot more...

Cre8 RD has a reputation for 'building things' and 'gardening work'. But we also do 'moving things'. With the Land Rover and trailer, Martin often gives young people a taste of Cre8 Works by collecting the big tipping trailer to pick up logs, tree branches and other green waste from where Cre8 Works are working and taking it to the local recycling centre.

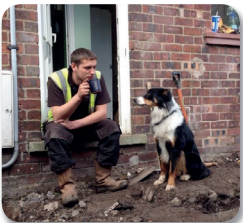
Another regular job has seen RD collecting and delivering the equipment for the

Churches Winter Homeless Accommodation project in Macclesfield. We're really pleased that we've been able to get involved with this project.

RD maintains the gardens at St Barnabas Church, which are looking pretty smart and a showcase at the moment thanks to some very neat mowing and weeding. The vegetable garden at St Barnabas, now in its eighth year, is producing some healthy food each season. We have root vegetables, hard and soft

fruit and the strawberries go into making jam during the summer as well as for strawberry teas at young people's Club Nights.

For the first time this year we've not built a shed, but we have worked on renovating the 'shed end' for the Cre8 Bike Shed at The Building and on helping to build a house! Young people have worked on excavations, concreting, carpentry, joinery, roofing, painting and lots of moving and lifting.



THE SHED END

The Shed End renovation has been a great piece of work, all done by young people with materials purchased after fundraising by Paul Truswell on his Trussy Trek walk between Holy Island and Iona. Paul raised the fantastic amount of £2,500 which meant that we could convert the Shed End from a smelly rotten room into a bright new workshop for bike repairs. Thank you Paul and thank you to the young people who have worked on the project !

Some young people from RD have gone on to be employed on cre8 works and cre8 facilities, as well as jobs outside cre8. RD prepares young people for employment by teaching them the disciplines necessary so they can work safely and appropriately with hand and power tools like petrol trimmers, blowers and hedge trimmers.

Social enterprises

CRE8 WORKS AND CRE8 FACILITIES

We started Cre8 Works as a social enterprise business because young people asked for it. Way back at the beginnings of Cre8, Rob used paid work as a way of engaging young people in positive activities for the benefit of the neighbourhood. Young people received a flat rate for helping out for a day, doing landscaping and construction work to renovate and landscape the garden at the back of the Poolswood Family Centre. When that was done the young people suggested that we go and find some more paid jobs to do, so we did and we started doing garden clearances and shed building for people.

The principle we've worked to at Cre8 with our businesses is that work is good and that we can all do some form of work – that is, we can

all do something to earn our keep. It doesn't matter how able we are, we can all make some form of contribution to our community – and that is what work is. Some of us, many of us, need support and help with our work and it's up to each of us to support each other with what we have to do. Of course, we also benefit from training and from earning income, for ourselves to live off and also to pay for Cre8's activities. So to us the idea of work led us naturally to set up an organization, a business which could organize the work, separate from the charity. This is how Cre8 Works came about. We didn't think 'we need a social enterprise', we thought 'we need to keep on doing work'. Work is one of the core principles we have at Cre8, the others are Learning, Fun and Food.

WORKS PLUS

The young people involved in Cre8 Works and Cre8 Facilities are employed by the charity in Cre8's Works Plus project, we started this project six years ago as a way of combining work and learning; two of our core principles.

Young people are offered one or two days per week regular employment on one of Cre8's social enterprises if they study simultaneously on an accredited college course. We don't stipulate what the course has to be.

“The young people doing the work were fantastic. They worked nonstop, what a difference having the younger workers.”



Gaining experience and confidence



Work for 1-2 days per week whilst doing a college course



Moving into the job market or further training

CRE8 WORKS

Cre8 Works was the first business we set up, originally doing gardening work for private customers. Now that business does grounds maintenance, weed control, tree felling and garden rubbish removal and we have invested in the equipment so that we can do these things

professionally and efficiently. We have an annual contract from Peaks and Plains Housing Trust to maintain pathways behind and around their tenant's properties and we take on contracts and jobs from local businesses and private customers.

Cre8 Works



CRE8 FACILITIES

Cre8 Facilities has been operating for nearly a year now. We started this commercial vehicle jet washing business when Creamline Dairies approached us and asked if we were interested in a contract to clean all their milk floats in the Manchester area, regularly. We said yes !



Cre8 Works and Cre8 Facilities are two well-established social enterprises with a good track record. Both businesses earn money for Cre8, which helps us to provide activities for families on the Moss Rose Estate.

MOVING ON

We see our businesses as a way of helping young people to move on.

We have some brilliant stories of young people who started at Cre8, without much hope of a permanent job and without many skills or qualifications. These young people have done work experience with us, been supported with education and college, been employed in

Cre8 Works for a period and then gone on to be employed somewhere else full time. Them moving on gives us the room to employ someone else and start again, we like that.

Get involved

Like what you've read? Want to get involved? There are loads of ways you can support Cre8...

BECOME A FRIEND

For as little as £10 a month you can support the work of Cre8.

Friends are people who make regular donations to us. Their regular gifts allow us to budget and plan for the long term future. Funding a

small charity like Cre8 brings many uncertainties. Our Friends give us the confidence that we can run activities on the Moss Estate in the long term.

As a Friend you will receive:

- Newsletters throughout the year

- The Cre8 Annual Report
- An invitation to 'spend a day in the life of Cre8'

If you're interested in becoming a Friend then simply get in touch using the details on this page.

VOLUNTEER

Volunteers are at the heart of Cre8.

We welcome volunteers of any age, background or experience. The most important thing for a Cre8 volunteer is to be able to listen to young people about whatever they

want to talk about and not to judge. Enthusiasm, patience and a passion for 'something', be it bike riding or flying model aeroplanes, are also really important qualities.

Volunteers work on all our projects - running crafts at clubs, taking a one

to one session with a young person, or helping someone learn to play an instrument.

If you'd like to talk to someone about volunteering, please get in touch using the details on this page.

JOIN OUR TRUSTEE GROUP

Cre8 is on the lookout for new Trustees; people who are enthusiastic, passionate and committed. Trustees carry the responsibility for the charity and everything it does. We are looking for creativity, ideas and people who are

interested in determining the future for Cre8.

If you think you have something to offer, we'd like to hear from you. Get in touch using the contact details on this page.



FUNDRAISE

Whether you plan to hold a coffee morning, run a marathon, or have a collection at Church, as a registered charity we're grateful for all donations. If you are planning to hold an event to raise money for Cre8 just get in touch using the details on this page, for advice and support.

Telephone: 01625 503740

Email: info@cre8macclesfield.org

Address: The House 11 Belgrave Rd, Macclesfield SK11 7TW

Facebook: [/cre8macclesfield](https://www.facebook.com/cre8macclesfield)

Twitter: [@Cre8Macc](https://twitter.com/Cre8Macc)

Website: www.cre8macclesfield.org

YOU MIGHT THINK YOU KNOW WHAT CRE8 DOES, BUT ACTUALLY WE DO ALL THIS...

run two profit making businesses that fund our charity
 ~ train local people to become youth workers ~ the Christian principles of working, learning, and eating run through everything we do ~ help young people to get back into school ~ lead national youth work learning days ~ employ young people and adults ~ run bike rides ~ provide placements for students from Youth Work and Christian study courses ~ run two youth clubs ~ renovated a derelict community building using in-house skills and workers ~ take young people on life-changing residential ~ support adults, families and young people as they journey through life ~ practically support the Moss Rose Community ~ help young people to write their own music and lyrics ~ hold youth music concerts throughout the year ~ provide alternative education to young people across Cheshire (and sometimes wider!) ~ build sheds for the Iona Community ~ have featured in the Archbishop of York's book 'Hope Stories' ~ employ over 20 people ~ chop down trees (as part of our business, not just for fun) ~ have designed and built our own outcome measure system ~ provide free, professional music lessons to young people ~ design and create all our own publications (annual report, flyers, banners etc)

... and lots more!

Resources

The following information provides a snapshot of how much we have raised and how we have spent our resources over the financial year 2013/14.

In order to gain a more complete understanding of our financial affairs, copies of the full Financial Statements are available from our website or the Charity Commission's website: <http://apps.charitycommission.gov.uk/showcharity/registerofcharities/RegisterHomePage.aspx>

Income

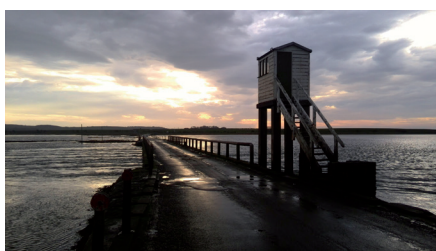
Grants	£101k	46%
Earned income	£80k	37%
Donations & Gift Aid	£32k	15%
Other Income including fundraising	£5k	2%

Total incoming resources for 2013/14	£218k	100%
---	--------------	-------------

Expenditure

Charitable activities	£187k	88%
Premises, admin & office	£14k	7%
Travel, repairs & maintenance	£8k	3%
Accountancy & governance	£4k	2%

Total resources expended for 2013/14	£213k	100%
---	--------------	-------------



TRUSSY TREK FUNDRAISING

A long-time friend of Cre8, Paul Truswell, trekked 282 miles from Holy Island to Iona and raised a whopping £2,500 to pay for the materials to renovate the 'Shed End' at the Cre8 Building into a fully kitted out Bike workshop for our bike project.

Walking all that way, carrying his camping gear and supplies was a fantastic achievement, as well as raising so much money for Cre8!

And Paul's facebook photos and updates throughout the trek were brilliant - you felt like you were sharing the adventure with him (from the comfort of your own sofa!)

Thank you Paul.

Thank you

ON BEHALF OF ALL THE YOUNG PEOPLE WHO
HAVE BEEN INVOLVED WITH CRE8 THIS
YEAR, "THANK YOU"

Thank you to everyone who has supported Cre8 this year, including funders, supporters and volunteers.

Our special thanks goes to those individuals who support us on a month by month basis (also known as 'Friends') or with private donations.

We would also like to extend our thanks to all our donors who wish to remain anonymous, anyone who has attended one of our events, volunteers who give so generously of their time, and those who have simply said nice things about Cre8.



The Queen's Award
for Voluntary Service



Anne Duchess
of Westminster's
Charity





Find us at:

www.cre8macclesfield.org

**[facebook.com/
cre8macclesfield](https://facebook.com/cre8macclesfield)**

01625 503740