

March 2020 Newsletter

[Campaign Preview](#)[HTML Source](#)[Plain-Text Email](#)[Details](#)

[View this email in your browser](#)



Social Action | Project Grow Grocery | Ettie's Kind Donation | New Team Members | Upcoming Events

Cre8's March Newsletter!

Take a look at everything we've been up to over the past month!

Social Action

During the February half term, Amy and several of our young people took part in some social action workshops. Over multiple days they took apart some wooden pallets and made them into planters. They managed to complete 4 and painted 3 of them, ready to go out to our residential care home project.

They have also measured up for a shelving unit to be put into the new office at the Hope Centre and taped up ready for painting in the coming weeks.

Good work everyone!





Project Grow Grocery

Our Project Grow Grocery has been doing amazing over the past few months!
Here's all they managed to achieve in just one week during February:

- 51 Members visited the Grocery in total. Each receiving approximately £20 worth of produce. That covers 160 people in those 51 households.
- Ingredients for around 30 meals were provided to Macclesfield Community Kitchen (MCK) to be prepared and cooked by their awesome

team of volunteers. Served on Saturday the 29th at St Pauls.

- Ingredients for 50 meals were provided to Hope Centre's Pay-as-you-feel Cafe at St Johns Church on the Weston on Friday the 28th. All food was cooked and prepped by their awesome team of volunteers.
- Loaves were provided to St Barnabas Tots Group for the lovely bunch of tots who come through the doors.
- We delivered meals to WHAM (a weekend night shelter) which was held at the URC on Friday, Saturday, and Sunday nights. The Scouts cooked the meals - we kept them in our freezers and delivered as needed.
- 9 volunteers worked hard sorting all the food we were donated.
- Bunches of flowers were provided to Cheshire East's Mayfield Centre Day Care Service for adults which caters for people with learning disabilities, physical disabilities, and older people. These were used in a craft activity.
- We collected food from 7 supermarkets across 5 days.

Thanks Team and to everyone who has come along and taken food!



Ettie's Kind Donation

We were surprised with a very kind donation this month! Ettie Bowers attends St Alban's Pre-School, and decided that this year she wanted to use her Christmas money to make a donation to Cre8! The donation was brought to us by Jen Poulton, Ettie's teacher, and we received £130!

All of us here at Cre8 would like to say a huge thank you Ettie for her thoughtful generosity! This donation will be put towards our projects here at Cre8, and help make a difference in the local community here on the Moss Rose estate.

Thank you Ettie! You're amazing!



New Members of our Team!

We've had two new additions to our Cre8 team!





Hi, I'm Ollie and I'm the new music project coordinator and lead worker at drop-ins Mon, Wed and Fri.

I have been passionate about music since receiving my first keyboard as a present for my 8th birthday. Ever since, I have spent most of my free time honing my instrumental skills and creating original music in my home studio. I studied music tech at uni, play various instruments and have a particular interest in composition and music for media.

I joined the music project 8 years ago as a volunteer, becoming a support worker and tutor more recently. I have always enjoyed jamming in the studio with the young people here, helping them to develop their creativity and confidence. Our team of young volunteers, support workers and tutors do a fantastic job of fostering resilience and a can-do attitude in our young people so that they can produce music to an amazing standard.

I particularly like the lead up to concerts, watching the seed of an idea grow into a full band performance and the pride that young people and their families can take from their performance and progress in music.

I have enjoyed the transition from support worker to project coordinator as I am now getting a better sense of the young people's interests, ambitions and motivations. Talking to the young people has inspired me to be bold with the project and carry on the great work that Tom did here with a focus on collaboration and using music as a tool for building relationships and learning to overcome obstacles. See you at one of our performances soon!!

overcome obstacles. See you at one of our performances soon!!



Hey, I'm George. I am a musician and media editor born and bred in Macclesfield. After graduating University with a 1st class degree in Popular Music and Recording, I decided to centre my career around the arts and teaching others so that they can successfully navigate their musical education!

Upcoming Events

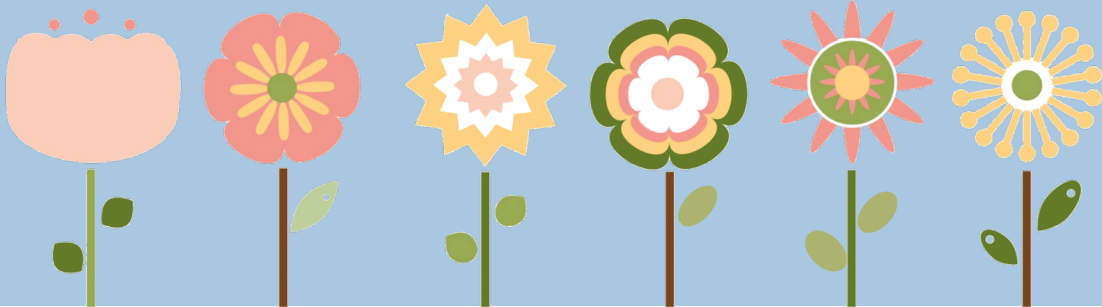


2020
10am - 1pm
St Barnabas Church, Lyme Ave, SK11 7RS

Come along and get your perennials, shrubs, house plants, and bedding plants in time for the new gardening season!

All proceeds will go to support Cre8.

Tel: 01625 503740
Email: katy.wardle@cre8macclesfield.org
Facebook: [@cre8macclesfield](https://www.facebook.com/cre8macclesfield)



Spring Plant Sale!

Calling
all gardeners!

*If you need a
pot or some
compost, just
ask!*

We will once again be holding a Spring Plant Sale on the
25th of April. We are looking for...

VOLUNTEERS to help on the day!

GROWERS and **GARDENERS** to grow and donate plants and seeds
that we can sell!



Copyright © 2020 Cre8, All rights reserved.

You are receiving this email from Cre8. Cre8 Macclesfield Ltd is a registered company number 7737871 and a registered charity number 1147150.

Our mailing address is:

Cre8
11 Belgrave Road
Macclesfield, Cheshire SK11 7Tw
United Kingdom

[Add us to your address book](#)

Want to change how you receive these emails?

You can [update your preferences](#) or [unsubscribe from this list](#).

